



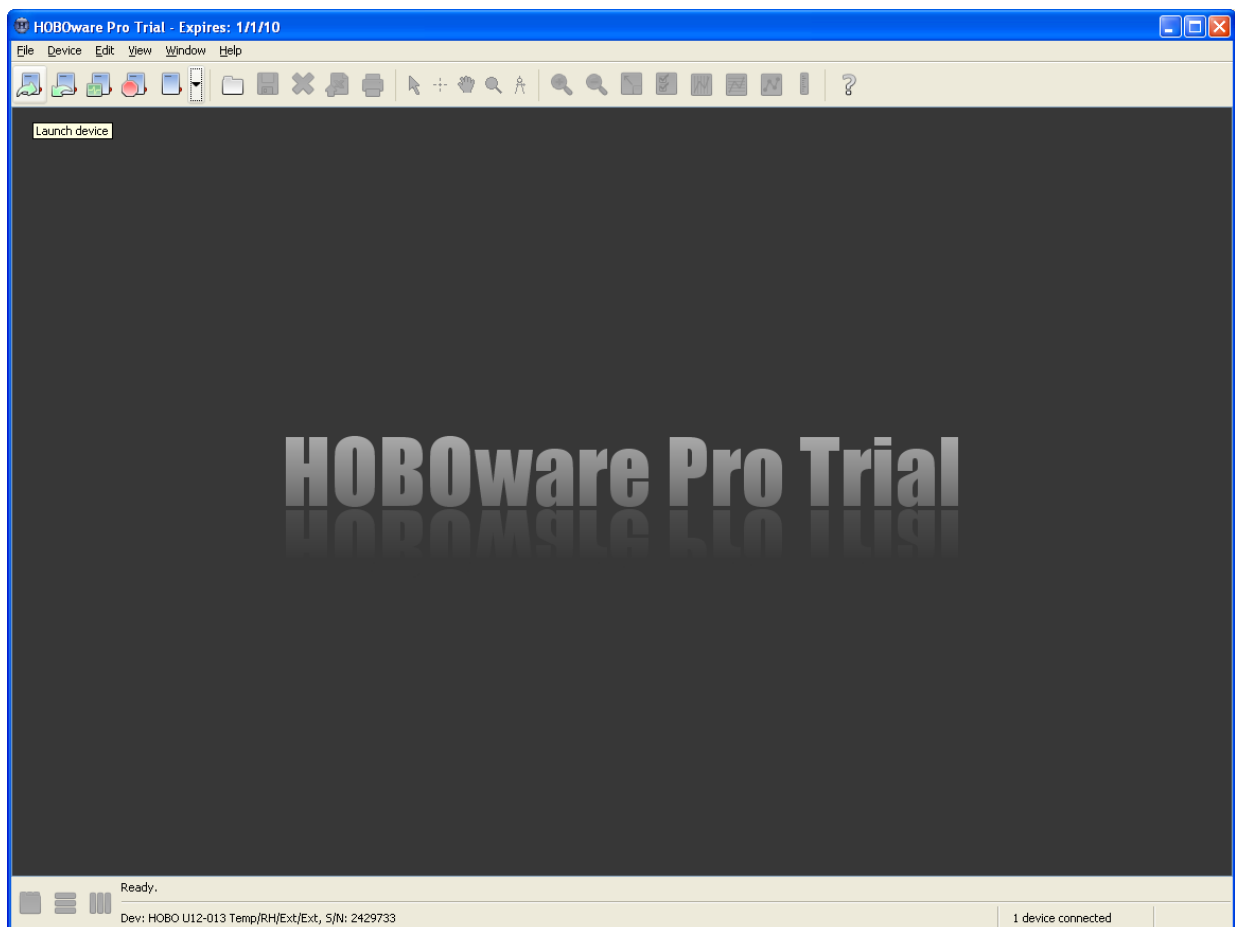
Logging and Viewing Data on the DL-2 Datalogger using HOBOWare Pro

Note: This document is intended to serve as a brief supplement to your ozone monitor hardware user guide, the DL-2 user guide, and the HOBOWare Pro user guide. It is not intended to be a replacement for any or all of those documents, so please refer to them for information not covered here.

Step 1: Install the HOBOWare Pro software, and make sure that your ozone monitor is connected properly to your DL-2. If you ordered the DL-2 from us, the software should have been included with your DL-2 kit. For specifics on wiring, refer to your monitor manual or see the picture(s) here:

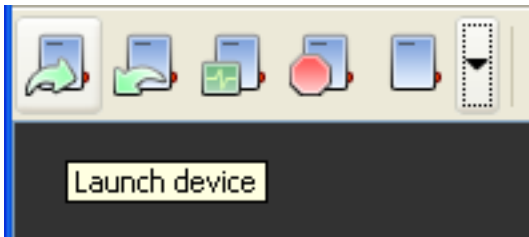
http://www.ozonesolutions.com/OS-4_ei8.html

Step 2: Start up HOBOWare. If this is the first time you have run the software, you will be presented with a box where you can enter your software key code. Enter your key (or leave the trial key) and you will be presented with a screen that looks like the following:

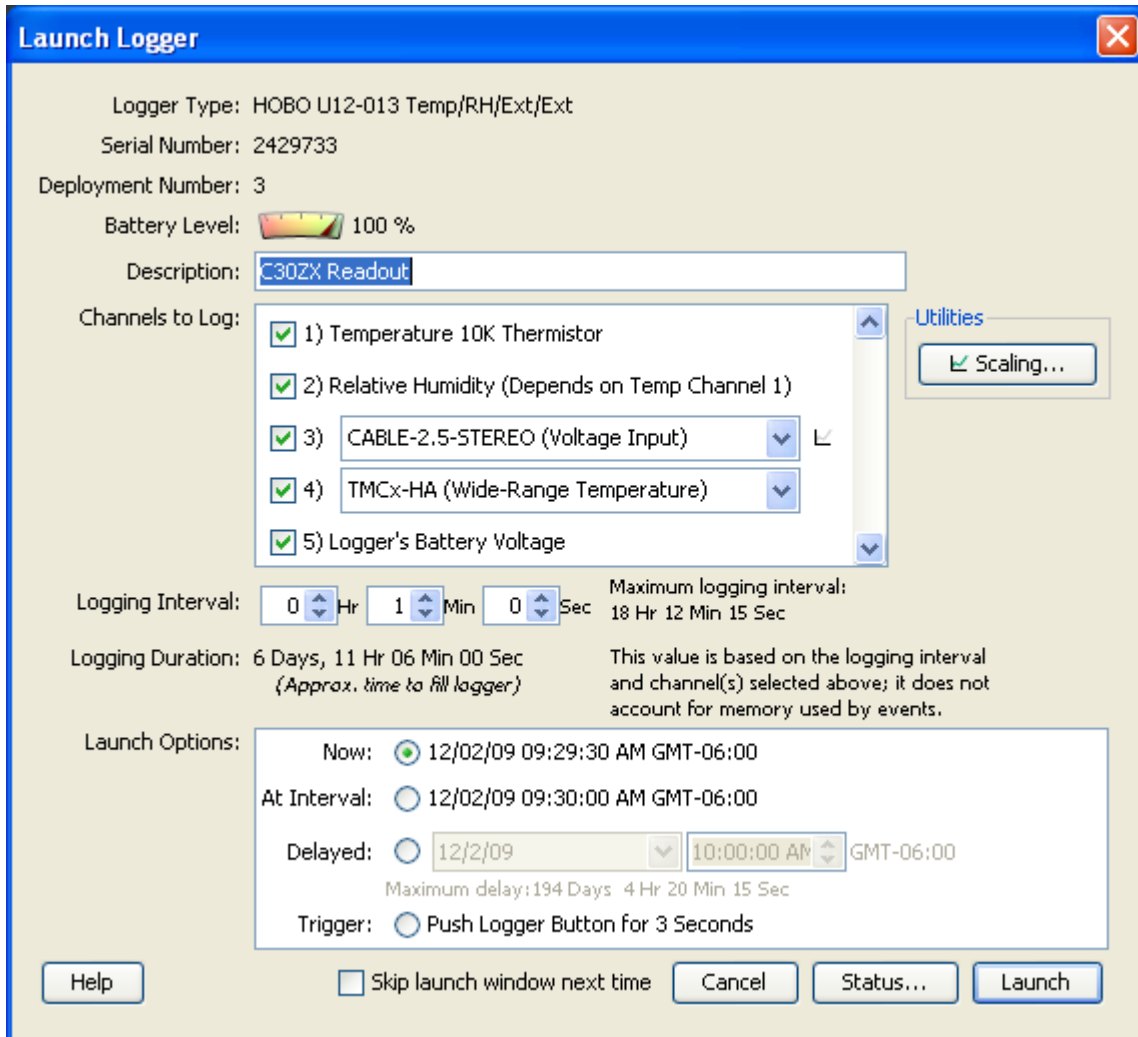


To use the program's basic options, you can either click the icons at the top of the window, or use the drop down menus above them. Looking at the icons, from left to right you have the following:

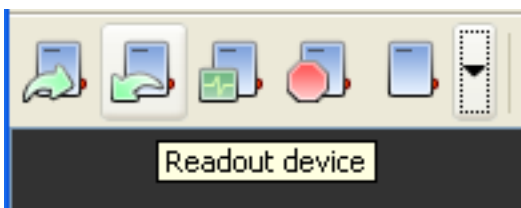
Launch Device:



To launch your datalogger from software, you click this icon. You will then be presented with a screen like the one below, where you can configure the various specifications for the device, such as which input(s) you will be receiving, your logging interval, and when you want the logger to launch. For the example given, we have selected "CABLE-2.5-STEREO (Voltage Input)", since we are accepting a voltage output from our C-30ZX Ozone Monitor.



Readout Device:



When you Readout the selected datalogging device, you will pull the data from your DL-2 for plotting on the screen. Select what and where you want to save the data, choose which data you want plotted, specify how you want it displayed, and click "Plot". NOTE: If the datalogger is currently running, you will be presented with an option to either stop logging or continue logging after you Readout the device.

Device Status:



The Device Status screen in HOBOWare lets you see what the status and readouts of your DL-2 are in “realtime” (depending on your screen refresh interval). Information displayed includes battery level, memory usage, logging interval, and the current readouts of all the device sensors (temp, relative humidity, and any external sensors you may have connected on channels 3 and 4 – channel 3 is voltage in this example).

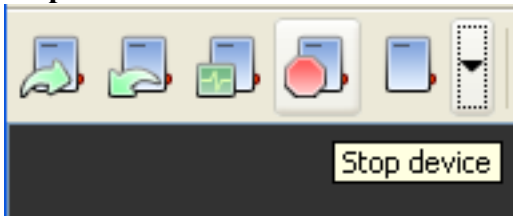
The Status window is divided into three main sections:

- Device Identification:** Shows a device icon and the following information:
 - Device: HOBO U12-013 Temp/RH/Ext/Ext
 - Manufacturer: Onset Computer Corporation
 - Description: C30ZX Readout
 - Serial Number: 2429733
 - Firmware Version: 1.0.5
- Device Details:** Shows operational metrics:
 - Battery Level: 100 % (with a full battery icon)
 - Memory Used: 1 % (with 10 small square icons, the first one is filled)
 - Current Status: Launched, Logging
 - Last Launched: 12/02/09 09:30:11 AM GMT-06:00
 - Deployment Number: 3
 - Logging Interval: 0h 1m 0s
 - Current States: Button Up
- Current Readings:** Features a "Screen Refresh Interval" dropdown set to 1 sec. Below is a table of sensor data:

Number	Measurement	Value	Units
1	Temperature 10K Thermistor	74.120	°F
2	Relative Humidity (Depends on Temp Channel 1)	27.667	%
3	Voltage	0.08759	V
4	Temperature 10K Thermistor	169.628	°F
5	Logger's Battery Voltage	3.14	V
6	Dew Point (Requires Temp and RH)	39.027	°F

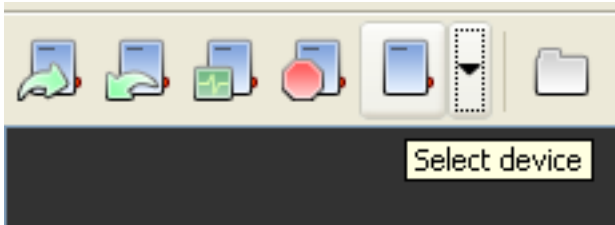
Buttons for "Help" and "OK" are located at the bottom of the window.

Stop Device:



This button is rather self-explanatory. This button allows you to stop the datalogger via HOBOWare. Click the button, confirm that you want to continue, and it's done.

Select Device:



If you have multiple DL-2 dataloggers connected to a single computer, this option lets you pick which one you are going to work with. You merely select the appropriate device from a list.

Step 3: Start logging data using the information given above. Select the appropriate DL-2 (if necessary), click “Launch Device”, set your parameters, and start gathering information.

Step 4: View your readings in realtime by watching the “Device Status” display.

Step 5: Readout the Device while allowing logging to continue (if you wish). You can then save that information to your computer, plot it onscreen, etc.

In the end, you should end up with plots that look somewhat similar to the one below, showing how your parameters varied over time.

