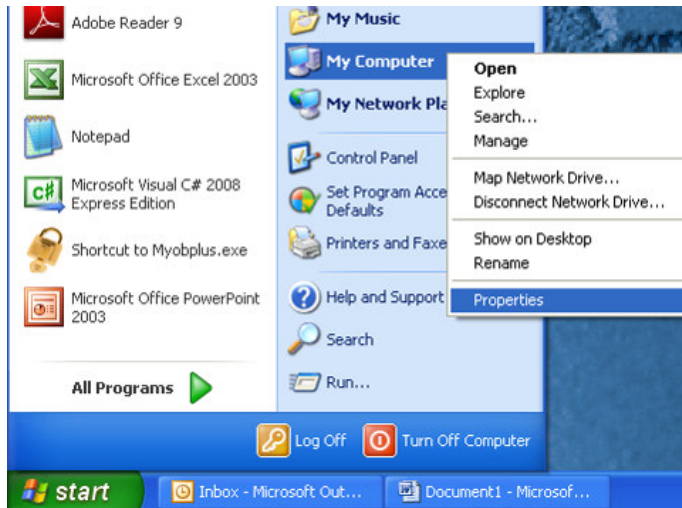
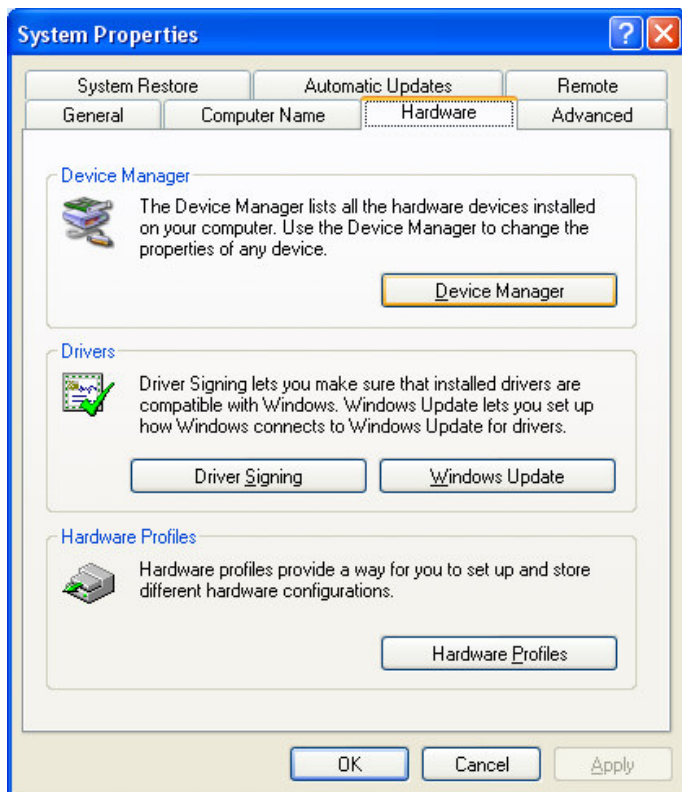


## Technical Note:

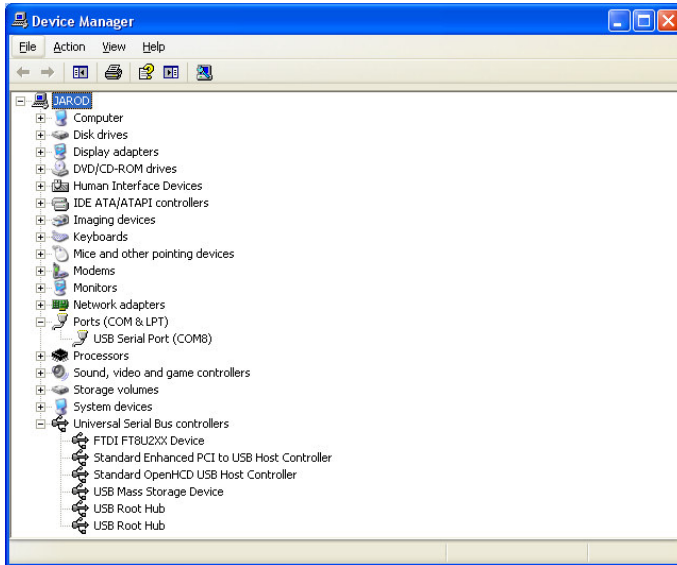
# R52 Serial to USB Adaptor COM Port Setup



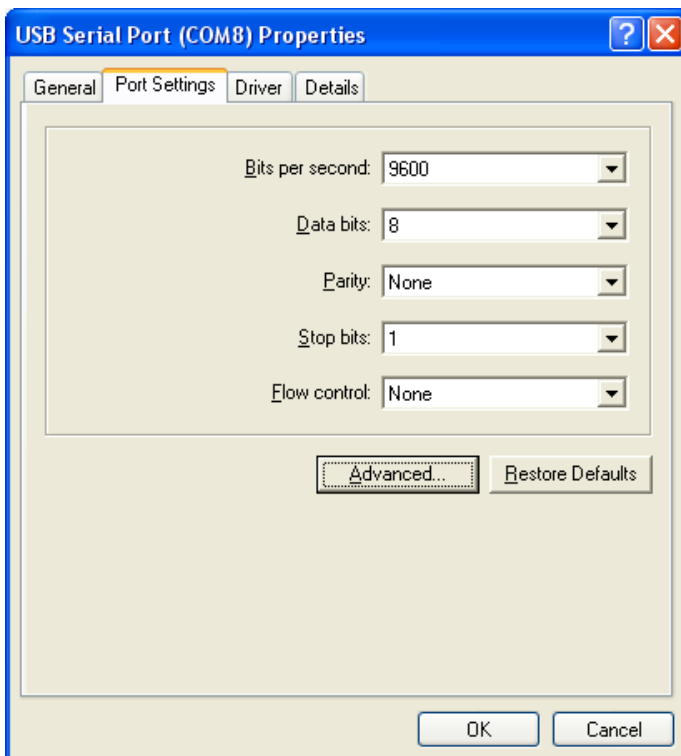
1. Right-click on My Computer.  
Select Properties.



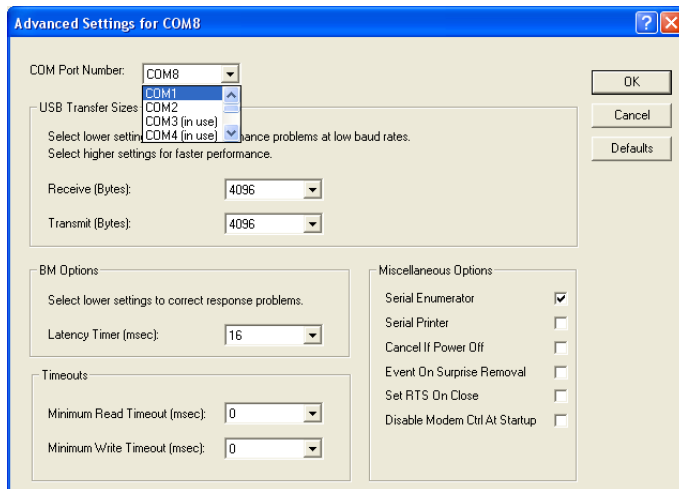
2. Select the Hardware tab, click  
on Device Manager.



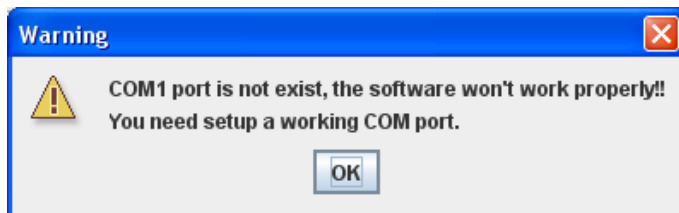
3. Plug in the USB to Serial cable and expand the *Ports (COM & LPT)* node and the *Universal Serial Bus controllers* node. You should have a *USB Serial Port* present under *Ports*, and a *FDTI FT8U2XX Device* present under *Universal Serial Bus controllers* **OR** you should have *USB Serial Port* present under *Ports*, and a *USB Serial Controller* present under *Universal Serial Bus controllers*.



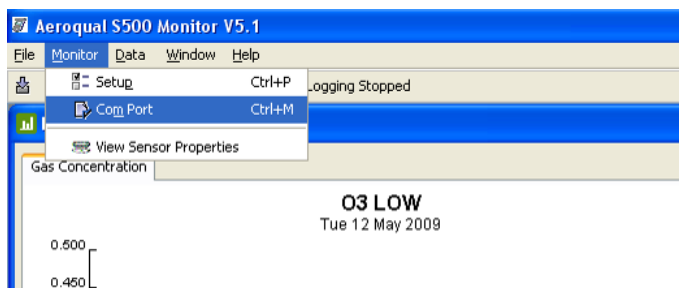
4. Select the *Advanced...* button under the *Port Settings* tab.



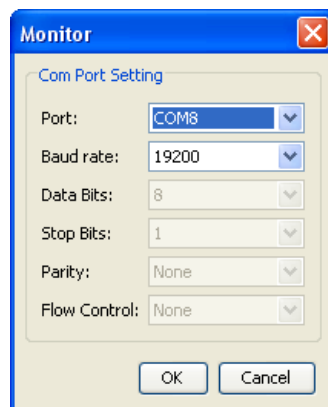
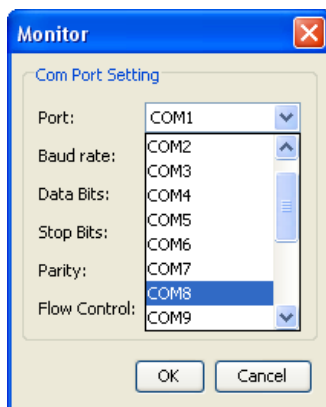
5. Select the port number to be a port you choose. For example COM1 providing COM1 is not in use. **In this example I have left my COM port as COM8.**



6. Start Aeroqual S500 V5.1 monitoring software.
7. Click OK. Aeroqual S500 V5.1 monitoring software starts.



8. Select Monitor → Com Port.



9. Choose the COM port which you have got configured. **In this example I am using COM8.**

10. Your system should be configured and working correctly.