

# Heavy Duty Porous Diffuser

## 20 Micron Stainless Steel Diffuser

The SD-12 is a stainless steel diffuser with a 20 micron pore size. Sintered stainless steel is welded to and end cap and pipe thread connection to offer a durable and effective ozone diffuser.



### Features

- Completely stainless Steel Diffuser
- 20 Micron pore size
- Durable diffuser will not break or get brittle over time
- Completely welded construction
- Up to 3 CFM flow rate
- Small diameter fits in tight spaces

Product ID: **SD-12**  
 Stock: **Yes**  
 Price: **\$230.00**

### Compatible Fitting Choices

Recommended fittings to connect tubing to the SD-12

	Part Number	Product Description	Price	Add To Cart
44640	SC-FC-6-4	3/8-in Tube, 1/4-in FNPT	Online Pricing	Buy Online!
43470	KC-FC-6-4	3/8-in Compression x 1/4-in FPT Kynar Female Connector	Online Pricing	Buy Online!

### Specifications

Pore size:	20 Micron
Diameter:	0.75-inch Diameter
Connection:	1/4-inch Male NPT
Diffuser Material:	Sintered Stainless Steel
Connection Material:	Stainless Steel
Maximum Flow Rate:	3 CFM
Minimum Flow Rate:	No minimum flow rate. Tiny bubbles occur even at 1 LPM!
Diffuser Length:	12-inch diffuser length
Overall Length:	13-inch Overall Length
Weight:	1-lb (0.5 kg)

## SD-12 End Cap



The SD-12 end cap is welded directly to this diffuser to guarantee that there will be no leaks.

## SD-12 Connector



The 1/4-in Male NPT connector is conveniently welded to the body of the diffuser to prevent leaks and breaking.

## SD-12 in Action

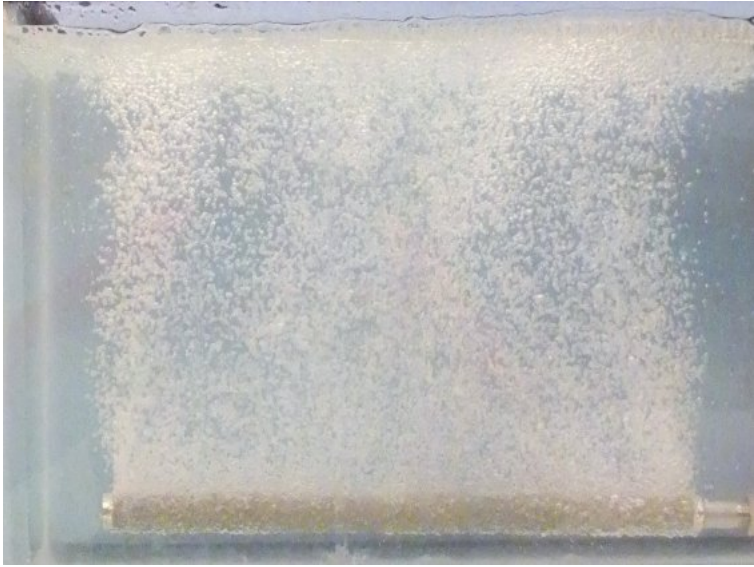
Video of the SD-12 in action. This video shows the SD-12 operating at a flow rate of 20 SCFH (0.3 CFM) to 180 SCFH (3 CFM). This video shows how the bubble size does not increase with flow. However, there are simply more bubbles from the diffuser.

## SD-12 Ozone Diffuser



The SD-12 is entirely fabricated out of stainless steel. The sintered stainless diffuser section is welded to the end cap and threaded connector. This makes for a durable long lasting diffuser. All parts are completely ozone compatible!

## SD-12 In Action at 10 LPM



This is an image of the SD-12 operating at 10 LPM (20 SCFH) of oxygen flow. This image shows the small bubble size from the SD-12 and the seamless flow across the entire diffuser.

Many diffusers we have tested in the past limit flow to various areas of the diffuser at low flow rates. The SD-12 still allows consistent flow to the entire diffuser at even the lowest of flow rates.

## SD-12 In Action at 10 LPM

This video shows the SD-12 in action at a consistent 10 LPM (20 SCFH) of oxygen flow.

This is one of the most consistent diffusers we have ever tested. The flow of bubbles is consistent throughout the diffuser.

## SD-12 in Action at 3 CFM



This is an image of the SD-12 operating at 3 CFM (85 LPM) of oxygen flow. This image shows how the bubble size from the SD-12 remains fairly small even at the max rated flow. Many diffusers we have tested simply create much larger bubbles at higher flow rates. The SD-12 is a great example of how a diffuser should react to various flow rates.