

Ozone Compatible Compressor

high pressure ozone pump

The ozone compatible OZC-222 Compressor is now available for rent. This easy to use pump will transfer ozone long distances or compress ozone to push the ozone gas into high pressure water streams. This pump is completely ozone compatible. Only 316L SS & PTFE wetted parts used in the head construction.



Features

- Low Cost rental option
- Pre plumbed, ready to use upon delivery
- Long term rental prices available
- completely ozone compatible
- 1/2 Hp TEFC Motor
- PTFE diaphragms & 316L SS wetted parts
- great for groundwater remediation or air sparging
- small size but very powerful

Product ID: **OZC-222 Rental**
 Stock: **Yes**

Specifications

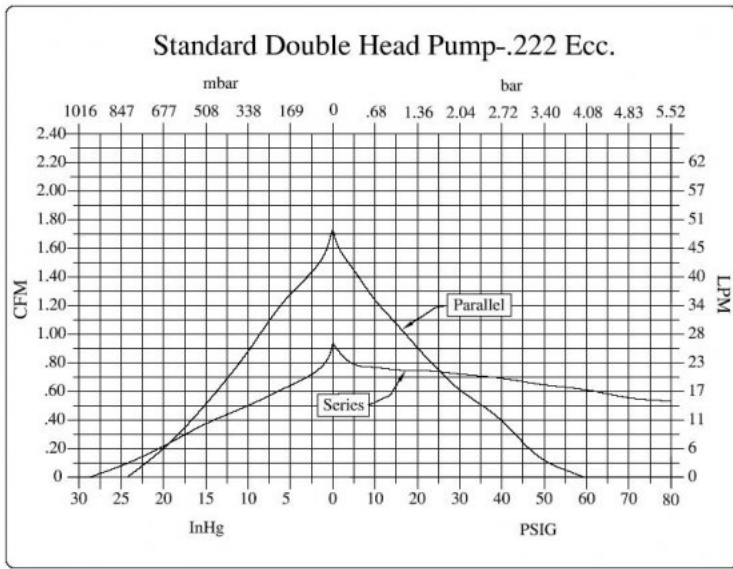
[b]Rental Information/[b]

Rental Terms:	Rental period starts when unit arrives, and ends when it is shipped back. The shipping time does not count against the rental period.
Availability:	We have 3 OZC-222 Compressors, we will almost always have one in stock for immediate shipment
Shipping Method:	System ships via UPS, Fed-Ex, or USPS in a heavy duty cardboard box with completely reusable shipping materials.
Return Shipping:	The OZC-222 is shipped in a sturdy box, with all reusable shipping materials. Simply repackage the OZC-222 and ship back via and standard parcel service.
Shipping Cost:	Please use the calculate shipping option on the top of this page.
Shipping Weight:	45 lbs

[b]Product Specifications/[b]

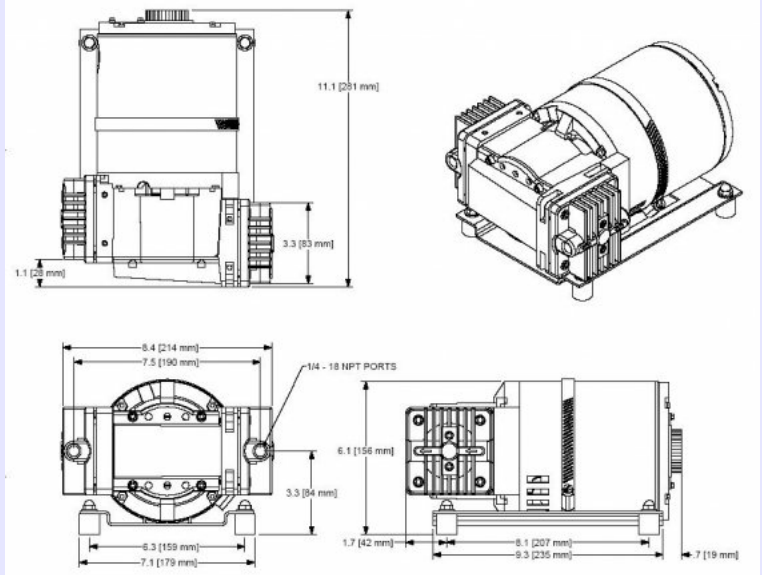
Wetted Materials:	PTFE diaphragms, 316L stainless steel heads & Hardened PTFE valve discs
Dimensions	8.4-in W x 6.1-in H x 11-in L (21.3-cm W x 15.5-cm H x 28-cm L)
Weight	37-lbs (16.8 kg)
Inlet & outlet ports	1/4" FPT
Motor Type	1/2 Hp General Electric TEFC (Totally enclosed fan cooled)
Open Flow	1.8 CFM (50 lpm) in parallel connection (see chart)
Flow at 75 PSI	0.45 CFM (13.5 lpm) in series connection (see chart)

OZC-222 Performance Chart



See how both head connections affect the ozone pump's flow & pressure. These Ozone Pumps can pull almost a full atmosphere of vacuum, or exert 75-PSI of ozone gas pressure.

OZC-222 Dimensions



Top, plan, side & isometric views of the OZC-222 ozone compressor.

OZC-222 Head Connections

Head Connection Schematic	Description
	Double headed pump, both heads operating independently.
	Double headed pump, intake lines in common, manifold - parallel.
	Double headed pump, series connected.

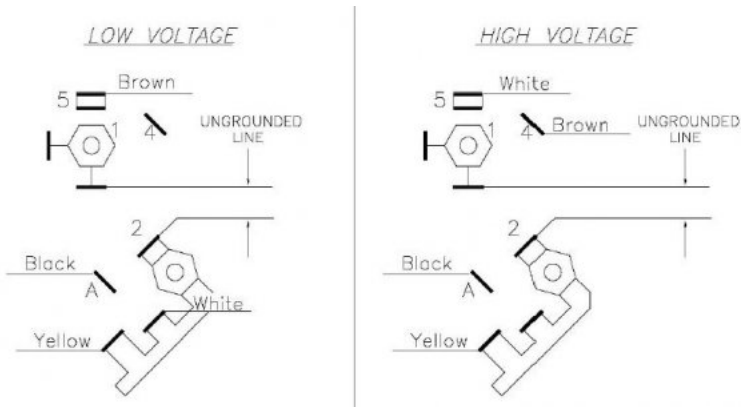
The many different type of head setups allow for varying pressures & flowrates. These setups correspond to the pressure & flow chart.

OZC-222 High O3 Concentration Application



Image of compressor being used at the Alberta Research Council in Vegreville, AB. It is pumping 9% concentration by wt. ozone at 75-PSI. This research would not be possible without this compressor!

OZC-222 Wiring Diagram



General purpose wiring diagram for low (110V) or high (230V) voltage.